

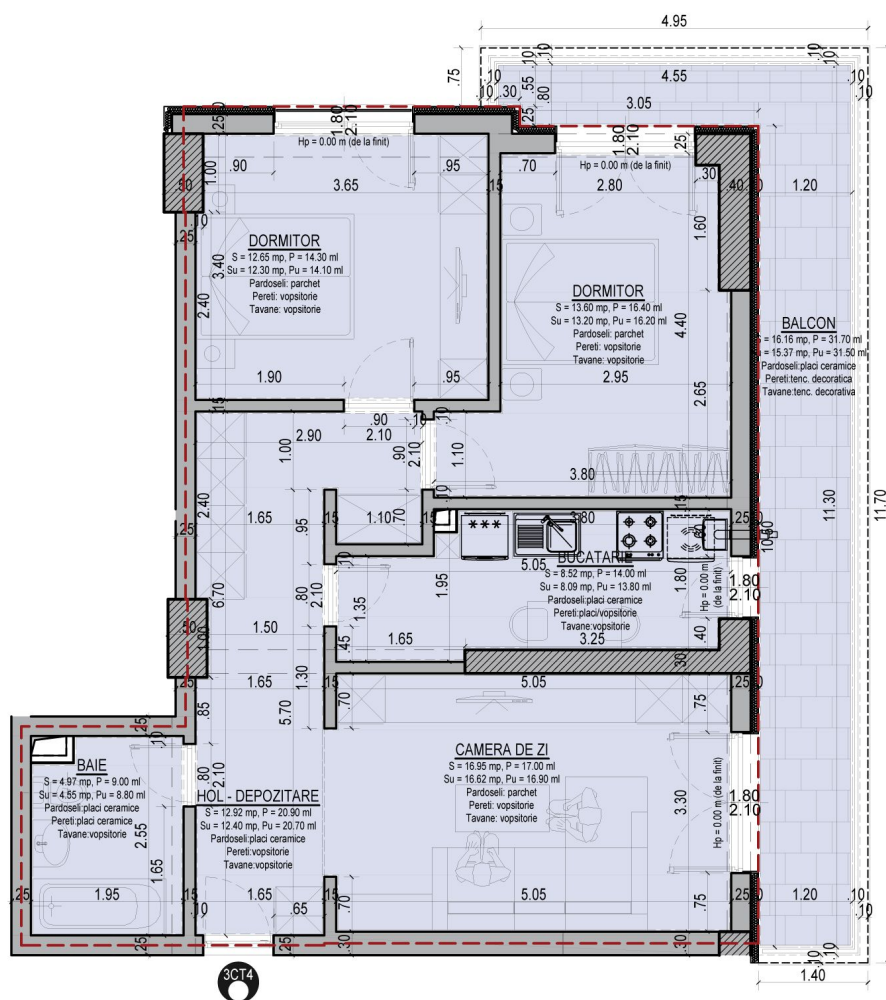
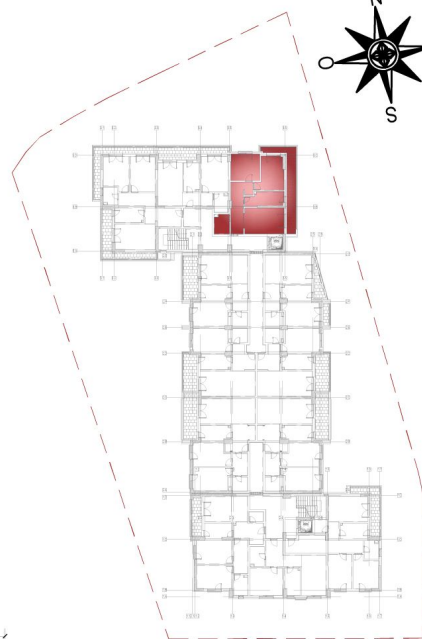
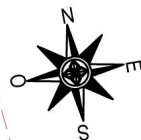
# APARTAMENT 3 CAMERE TIP 4c - Scara 1, Corp 1, orientare EST, NORD

NR. TOTAL APARTAMENTE: 2 apartamente

Amplasare apartamente:

Etaj 2: ap. nr. 17;

Etaj 5: ap. nr. 38.



88.000 € (Avans 50%)

T.V.A inclus 5%

92.000 € (Avans 15%)

## APARTAMENT 3 CAMERE TIP 4c

SUPRAFATA CONSTRUITA: Sc ≈ 83.54 mp (fara balcon)

SUPRAFATA UTILA INTERIOR : Sui ≈ 67.16 mp

SUPRAFATA UTILA BALCOANE: Sub ≈ 15.37 mp

### NOTA:

\* DIMENSIUNILE CAMERELOR SI SUPRAFETELE AFERENTE ACESTORA SUNT APROXIMATIVE

\* MOBILAREA APARTAMENTULUI SI FINISAJELE CAMERELOR SUNT ORIENTATIVE